



BoatUS Foundation

Safe Boat Operation - Chapter 1 Worksheet

List three things typically found on a boat's capacity plate (LIST THEM):

Your state registration numbers and registration decal are like the "license plate" on your car and is typically required for mechanically-powered recreational boats. (TRUE / FALSE)

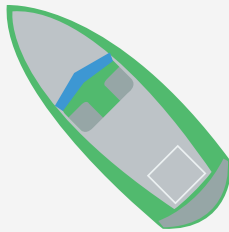
Draw an arrow to each part of the boat:

Bow

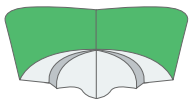
Stern

Port

Starboard



List four things that are generally true about the placement and appearance of your boat's registration numbers, letters and decal:



Planing hulls are designed to ride on top of the water and tend to be fast. Displacement hulls tend to push through the water and are typically slower. (TRUE / FALSE)

Boats manufactured after 1972 will most likely have a hull identification number (HIN) engraved on the bow which includes recommended horsepower, length overall and draft. (TRUE / FALSE)

Match the hull type to the best description (MATCHING):

Flat bottom hull

Round bottom hull

Deep-vee hull

Cathedral hull

Tunnel hull

air pocket produces lift

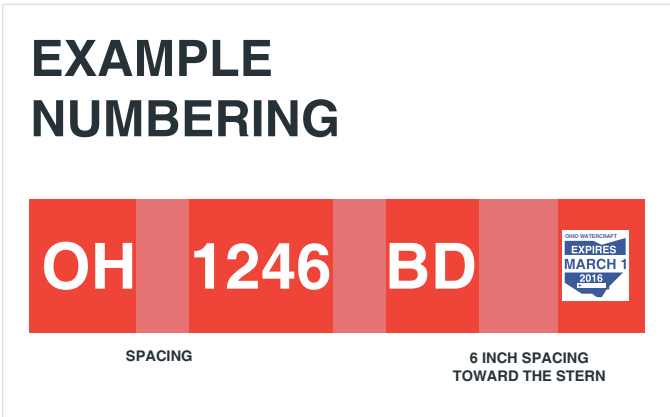
sometimes known as a catamaran

jon boats have this bottom

usually have keels for stability

good for cutting through rough water


Boats that are federally documented must be registered with the _____ and must have the documentation numbers permanently attached to _____.
(FILL IN THE BLANKS)



In my State of _____ my boat registration must be renewed every _____ year/s. (FILL IN THE BLANKS)

The Hull Identification Number (HIN) must not be altered, painted over, obscured or destroyed and is helpful in locating your boat if stolen because it is unique to your boat. (TRUE / FALSE)

After reading the section on garbage overboard, list three reasons why it is never a good idea to toss garbage in the water.

 Boats 26' in length or longer must have a garbage placard prominently posted aboard. Regardless of the size of boat you operate, list five items listed on this placard that cannot be thrown in the water where you typically do your boating.

Almost every area of the country has a specific aquatic nuisance species concern and as boaters we have an important role to play in not transporting these species from one body to another. (TRUE/FALSE)

Match the type of the Marine Sanitation Device (or toilet) with the proper description.

Type I	A fully self contained unit that must be taken ashore and emptied
Type II	A powerful unit that treats sewage, usually on boats over 65'
Type III	Treats sewage to reduce bacteria for discharge, with restrictions
Portable	Usually connected to a holding tank for pump-out at a proper facility

Explain the purpose of having a “Y” valve as part of marine toilet. (EXPLAIN)



Which of the following is true in regard to a fuel spill when refueling your boat?
(CHECK ALL THAT APPLY)

- ☐ Any spill that leaves a sheen on the water must be reported to the United States Coast Guard National Response Center
- ☐ You are responsible for any environmental damage caused by your fuel spill
- ☐ It is against the law to use detergents or other chemicals on a spill to disperse the sheen

Name at least one aquatic nuisance species you have encountered or may encounter where you typically do your boating. (LIST)

HINTS:



List five places where aquatic nuisance species can hide or hitchhike on a boat and/or trailer when traveling from one body of water to another. (LIST)
